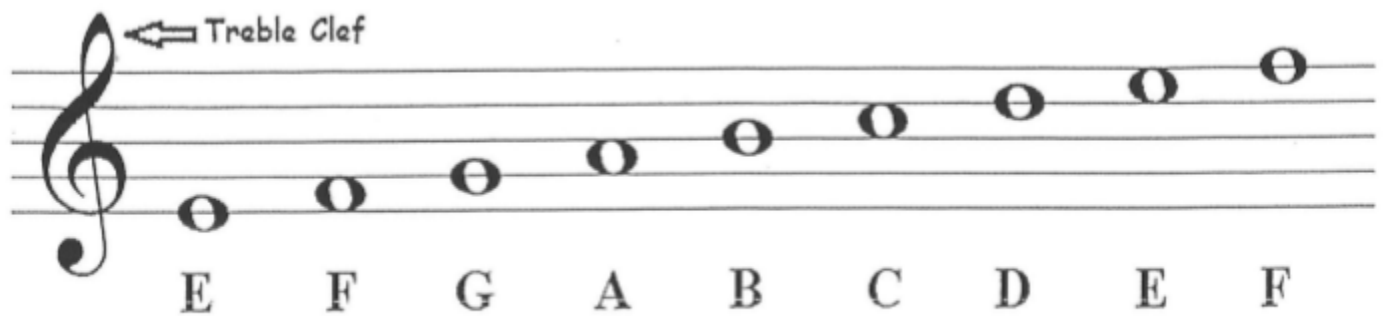
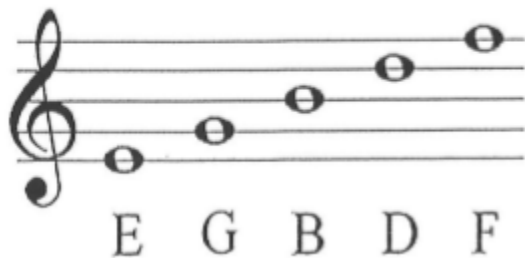


Treble Clef Notes

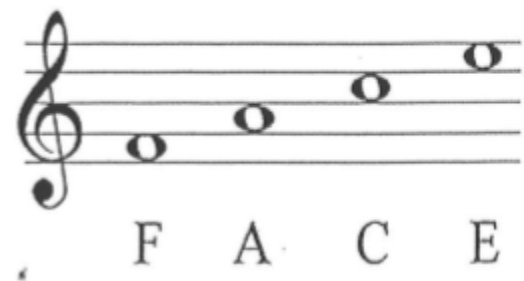
- The **STAFF** is a system of **5 lines** and **4 spaces** on which notes are written.
- Each line and space has a letter name.
- The lines and spaces are named using the first seven letters of the alphabet: A, B, C, D, E, F, and G.



Line Notes



Space Notes



- As the notes get higher we go forward in the alphabet: A, B, C, etc.
- As the notes get lower we go backwards through the alphabet: G, F, E, etc.

We memorize sayings to help remember the names of the notes...

Line Notes: **Every Good Bird Does Fly**

Space Notes: *FACE*

Ledger Line Notes

- There are notes above and below the staff.
- The small lines used to indicate these high and low notes are called **LEDGER LINES**.
- Just as in the staff, the notes above and below the staff are positioned in alphabetical order, A through G.
- The note **stems** always points toward the center of the staff. High notes have stems that point down; low notes have stems that point up.

